



PRE-UNIVERSITY



E-BROCHURE & MORE!
SCAN HERE

YOUR FUTURE BUILT TODAY

At INTI, our mission is to equip students with competencies for tomorrow, fostering leaders, innovators, and game-changers. We are committed to providing support and resources for the workplace of the future.

INTI INTERNATIONAL UNIVERSITY, PUTRA NILAI



INTI INTERNATIONAL COLLEGE SUBANG



INTI INTERNATIONAL COLLEGE PENANG



INTI COLLEGE SABAH

INTERNATIONALLY ACCLAIMED: A RISING STAR!

2025 QS WORLD
UNIVERSITY RANKINGS



INTI International University
Awarded QS Rising Star 2025



QS Asia University Rankings 2024



35+
YEARS

4
CAMPUSES

13,000+
STUDENTS

1,000+
EMPLOYEES

91,000+
GRADUATES

WHY INTI?



1000+ Industry Partners

INTI collaborates with more than 1000 industry partners including local and global organisations such as IBM, Google, FedEx, Shell, Unilever, Intel, Microsoft, Huawei, SAS, DELL and more.



100% Internship Placement

Good academic results are no longer sufficient to ensure the employability of students, therefore work experience in the form of internships is steadily becoming more important.



2000+ World Class Employer Projects

More than 2000 world class employer projects since 2010



Broad Range of Innovative Programmes

Accredited by the Malaysian Ministry of Education, INTI offers a wide range of innovative programmes from Pre-University to Postgraduate programmes.



Career Development

INTI Leadership Series - One of INTI's signature events that features top leaders from highly successful companies speaking to INTI students on topics related to leadership, innovation, entrepreneurship and strategies relevant to today's business.



Beyond Academic

INTI provides an enriching experience that enables students to find their true passion through on-campus events and activities organised by numerous clubs and societies. Through these activities, students are able to enhance their soft skills and talents.



Vibrant Community

Immerse yourself in a diverse and vibrant international community of over 13,000 students from 100+ countries.



World-Class Facilities

Experience unparalleled learning and growth in our signature world-class facilities and enjoy top-notch sports and recreational amenities for your well-being.

SUCCEED GLOBALLY WITH THE INTI EDGE

THE **INTI**
EDGE



We Are INTERNATIONAL

Our internationally recognised education will enrich you with the right skills and attributes to excel at whatever you do and wherever you go.

WORLD RENOWNED COLLABORATIONS WITH PRESTIGIOUS UNIVERSITIES

INTI offers exclusive franchise degrees and dual award degree programs in partnership with some of the world's highest-rated universities. These partnerships enhance your academic credentials and provide access to prestigious institutions of higher learning globally. With opportunities to learn from international lecturers, participate in joint projects, and embark on international study tours, you will gain a truly global educational experience.

Coventry University

University of Hertfordshire **UH**

Sheffield Hallam University
Knowledge Applied

Southern New Hampshire University

SWINBURNE UNIVERSITY OF TECHNOLOGY

CY CERGY PARIS UNIVERSITÉ

AUSTRALIA



INNOVATIVE Teaching & Learning

INTI integrates an array of proven approaches to teaching combined with revolutionary applications of technology in the classroom such as the innovative Canvas Learning Management System.



INTI uses Canvas as our Learning Management System (LMS), providing customizable tools to enhance teaching and learning for students and lecturers. This user-friendly platform supports collaborative digital learning environments, fostering a holistic educational experience.

Canvas's robust features — such as Rubrics, Modules, Calendars, Quizzes, Syllabi, Discussions, Analytics, and SpeedGrader — enable instructors to provide dynamic and personalized learning experiences. The integration of Turnitin with the AI Detector feature helps maintain academic integrity and ensures high-quality educational delivery.

INTI collaborates with industry partners like IBM, AWS, LGMS, SAS and Alibaba GDT to integrate industry content into the curriculum. This enriches course content, enhances learning outcomes, and makes education more engaging and practical.



INDIVIDUAL Development

INTI endeavours to include practical experiences in every programme it offers. From practical workshops taught by local and international guest lecturers and industry practitioners who share the ins and outs of the working world, to hands-on practical projects initiated by potential employers.



EMPLOYER PROJECTS
Real-World Experience



INTI LEADERSHIP SERIES
Expert Insights



INDUSTRY GUEST LECTURES
Professional Perspectives



BOOTCAMPS
Intensive Training



DESIGN THINKING MENTORSHIPS
Innovative Guidance

COLLABORATION WITH INDUSTRY PARTNERS

Over the years, INTI has cultivated a strong engagement with multinational companies and large local organisations on diverse platforms to foster innovation curricula and develop future-ready graduates.

The platforms include:

- Industry Awards / Scholarships
- Employer Projects
- Boot Camps and Career Workshops
- INTI Leadership Series
- Faculty Industry Attachments
- Coaching and Mentoring
- Industry Advisory Boards
- Industry Skills Certifications
- Employer Centric Curricula
- Internships and Job Placements



MAKE YOURSELF FUTURE READY

INTI PRE-UNIVERSITY - THE FIRST STEP TO SUCCESS

Standing out from the crowd in a highly competitive job market requires you to have a decisive edge. The INTI Pre-University course not only prepares you for tertiary studies at the world's best academic institutions, it also empowers you with a holistic foundation of both soft skills and knowledge to succeed later in life. If you have your sights set on studying in a world-class university, the INTI Pre-University programme is the first step to success.



INTI UNIVERSITY PLACEMENT SERVICES

The University Placement Office (UPO) provides comprehensive university information and application assistance exclusively for INTI students from all programmes.

UPO offers guidance and support for direct or transfer applications to partner institutions in Australia, New Zealand, United Kingdom, and Ireland.

Services provided by UPO:



Personalised Advising on:

- Programme, course, or institution of choice
- Admission requirements including academic qualifications
- Application procedures
- Information on available scholarships



Opportunities to Connect with University Representatives:

- Info sessions
- Study Abroad Fairs
- Workshops or guest lectures
- Face-to-face or online meetings



Assistance and Guidance including:

- Submission of applications to institutions
- Follow-up on additional documents or information required by the institution
- The outcome of applications from the institution
- Securing a confirmation of acceptance



Other Assistance includes:

- Student visa applications
- Pre departure briefings
- Information on accommodation

WORLD-CLASS SUBJECT MATTER EXPERTS

The INTI Pre-University programme is staffed by some of the world's best lecturers as well as a team of respected Subject Matter Experts (SME). Each SME is an authority in their own field, offering specialised, world-class expertise in an important subject, business area or technical field, allowing INTI students exclusive access to their expert knowledge. INTI's SMEs also act to ensure that the courses offered at the INTI Pre-University programme continue to be relevant and are on par with the world's highest standards. The results speak for themselves.

CAMBRIDGE A-LEVEL
Over the years, INTI has produced Cambridge A-Level students who have achieved Outstanding Cambridge Learner Awards. Recipients of the award are recognised as the world's best-scoring students, with INTI Pre-University students earning Top in the World and Top in Malaysia for Biology, Business, Economics, Law, Mathematics and Physics.

MEET SOME OF INTI'S SUBJECT MATTER EXPERTS

CAMBRIDGE A-LEVEL



SURESH ARUMUGAM
Economics
30 years of experience



TEO CHUN YEW
Mathematics
23 years of experience



SARA SEAH
Economics and Business
25 years of experience



TAN AI LIAN
Biology
19 years of experience



DR. RAMANI POOSPORAGI
Biology
19 years of experience



DR. MARISA KHOO
Biology
17 years of experience



TEOH SIEW CHIN
Physics
12 years of experience



DINASH KANDASAMY
Physics
12 years of experience



ABHILASHINI ACHUTHAN
Chemistry
12 years of experience



DR. LEY HOOD HONG
Physics
11 years of experience

FOUNDATION



MARIA LUISA DAVID APOSTOL
English and Skills for Creative Thinking
42 years of experience



LINDA LAI
Economics
28 years of experience



SHINEY JOHN
Statistics and Mathematics
28 years of experience



BILLY SIEW WOO BING
Statistics, Mathematics and Basic Computing
26 years of experience



DR. KUMAR KRISHNAN
Physics
25 years of experience



CHAN PEE VEN
Communication
23 years of experience



DR. NAZLINA MIRSULTAN
Business and Management
21 years of experience



MARIE SHIRLEAN MEKILEN
Basic Computing and Skills for Creative Thinking
21 years of experience



TS.DR. EDDIE SOON EU HUI
Visual Communication and Digital Communication
21 years of experience



DR. LOH SHIN KING
Physics
20 years of experience



AROKIA RAJ
Information Technology
20 years of experience



LIM SZE THENG
Chemistry
18 years of experience



LEONG WAI CHING
Biology
16 years of experience



OOI SAIM HUEY
Biology
16 years of experience



DR. SRIGANESHVARUN NAGARAJ
General Studies and Visual Communication
16 years of experience



BEVERLY V USIT
Business and Skills for Creative Thinking
15 years of experience



STANLEY J. LAIJUN
Business and Self Development Skills
14 years of experience



PROFESSOR DR. HO SOON MIN
Chemistry
13 years of experience



NADIA ABDUL SHUKOR
Chemistry
12 years of experience



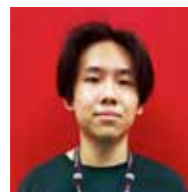
DG. SITI AISYAH BINTI AG BAKAR
Accounting
12 years of experience

TOP ACHIEVERS

CAMBRIDGE A-LEVEL 2024*



4A*
BRYAN LAW KAH HSING



4A*
CALVIN KWOK JIA CHENG



4A*
CHARMINE GOH YU JIE



4A*
NEOH ZHI PIN



4A*
NG YENJIE



4A*
GOH CAI YING



4A*
IRIS WONG XIN ZHI



4A*
OH YI WEN



4A*
TAN PEI YU



3A*1A
IAN YAP JO SHUA



3A*1A
NICHOLAS WONG
ZHONG HAO



2A*2A
CELINE CHEAH XIN YI



2A*2A
LEE KUAN EE



2A*2A
LIEW JIA MIN



2A*2A
RAYNELL NG LI HERN



2A*2A
TEH YUN JAE



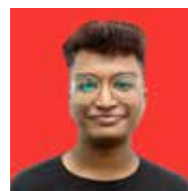
1A*3A
LAI JOE-N



1A*3A
PHANG YEE SEONG



4A
ELLIOTT LIM WEI HAN



3A*
MAHISH A/L MUNEESPARAN



3A*
TEOH KE YING



2A*1A
LEAN KAI QI



1A*2A
EUNICE CHUA XIN-YU



3A
JACOB MICHAEL LOW
KEN HENG



3A
LYN SIOW JIA YI



3A
RANE CHUA XIAN YING



3A
PARK SHINJI

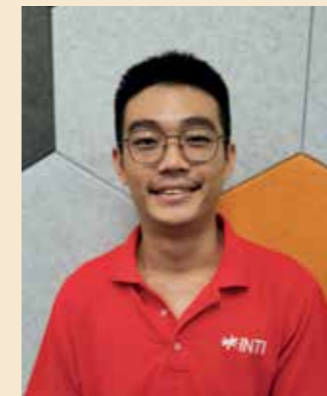


3A
TANUSH MOHAPATRA

and more...

* Based on Cambridge International A-Level May/June 2024 Examination Results.

HEAR WHAT OUR CAMBRIDGE A-LEVEL ALUMNI SAY



“Studying at INTI after graduating from IGSCE has led me to foster many new connections, in addition to helping me achieve my A-Level goals. I was very lucky to have met caring lecturers who guided me along my journey, and even more lucky to have met amazing classmates with whom I cherished every moment. My advice for current students is to never doubt your own abilities – you are who you manifest!”

ONG ZHI ZHENG
Cambridge A-Level
Massachusetts Institute of Technology (MIT)

“I have been with INTI since 2022, where I met great coursemates who later became friends. My lecturers – Ms. Ng, Mr. Teo, Ms. Teoh, Mr. Tan and Ms. Beatrice – have been very understanding and flexible about my coursework due to my circumstances, allowing me to balance my A-Level studies with other pursuits such as the Olympiad. The Head of the Program, Ms. Tan, and University Placement Office's Pn. Nazlina have been of great help with my university application as well. Ms. Tan and Ms. Ng, in particular, have offered me great support both in and outside the classroom, and they truly deserve our gratitude.”

WONG JER REN
Cambridge A-Level
Massachusetts Institute of Technology (MIT)



“Studying at INTI was truly transformative. Not only did it provide an excellent academic environment, but it also offered a wealth of extracurricular opportunities. Engaging in these activities allowed me to forge lifelong friendships and thrive both academically and personally. Additionally, the services provided by INTI enhanced my overall learning experience. To aim for an excellent grade at INTI was not a difficult job as the tutors had done a tremendous job in inspiring young minds. Moreover, they were always there to address our queries, ensuring that no doubts went unresolved.”

KHOR HAOJUN
Cambridge A-Level
Nanyang Technological University

“Studying Cambridge A-Level at INTI will always be a memorable experience. The programme was both interesting and practical for my future course needs. The faculty and staff were always welcoming and supportive, and I gained so much more than I expected. In every situation, my classmates and lecturers were there with encouragement and guidance. I'm forever grateful for my time at INTI, the incredible people I met, and the skills I acquired, which helped me become one of the top achievers in the programme.”

TAN YONG JIE
Cambridge A-Level
Peking University



RECOGNISED AND ACCEPTED WORLDWIDE

Since 1986, our Pre-University programmes have paved the way for students to gain entry into the following prestigious universities globally. In 2024, two of our Cambridge A-Level students achieved the remarkable feat of being accepted into the renowned Massachusetts Institute of Technology, USA.



AUSTRALIA

- The Australian National University
- Monash University
- The University of Adelaide
- The University of Melbourne
- The University of Queensland
- The University of Sydney
- The University of Western Australia
- University of Tasmania
- Queensland University of Technology
- Swinburne University of Technology



GERMANY

- Mannheim University of Applied Sciences
- University of Mannheim



HONG KONG

- The Chinese University of Hong Kong
- The Hong Kong University of Science and Technology
- The University of Hong Kong



INDIA

- Vinayaka Missions Research Foundation, Salem
- Manipal Academy of Higher Education
- Sri Ramachandra Institute of Higher Education and Research



IRELAND

- Royal College of Surgeons in Ireland



NEW ZEALAND

- Auckland University of Technology
- The University of Auckland
- University of Otago
- University of Canterbury



SINGAPORE

- Nanyang Technological University
- National University of Singapore



UNITED KINGDOM

- University of Cambridge
- University of Oxford
- Imperial College London
- King's College London
- Cardiff University
- Durham University
- Heriot-Watt University
- London School of Economics and Political Science
- The University of Bradford
- The University of Manchester
- The University of Sheffield
- The University of Warwick
- University College London
- University of East Anglia
- University of Edinburgh
- University of Hertfordshire
- University of Leeds
- University of Leicester



UNITED STATES OF AMERICA

- Massachusetts Institute of Technology
- Stony Brook University

and many more ...

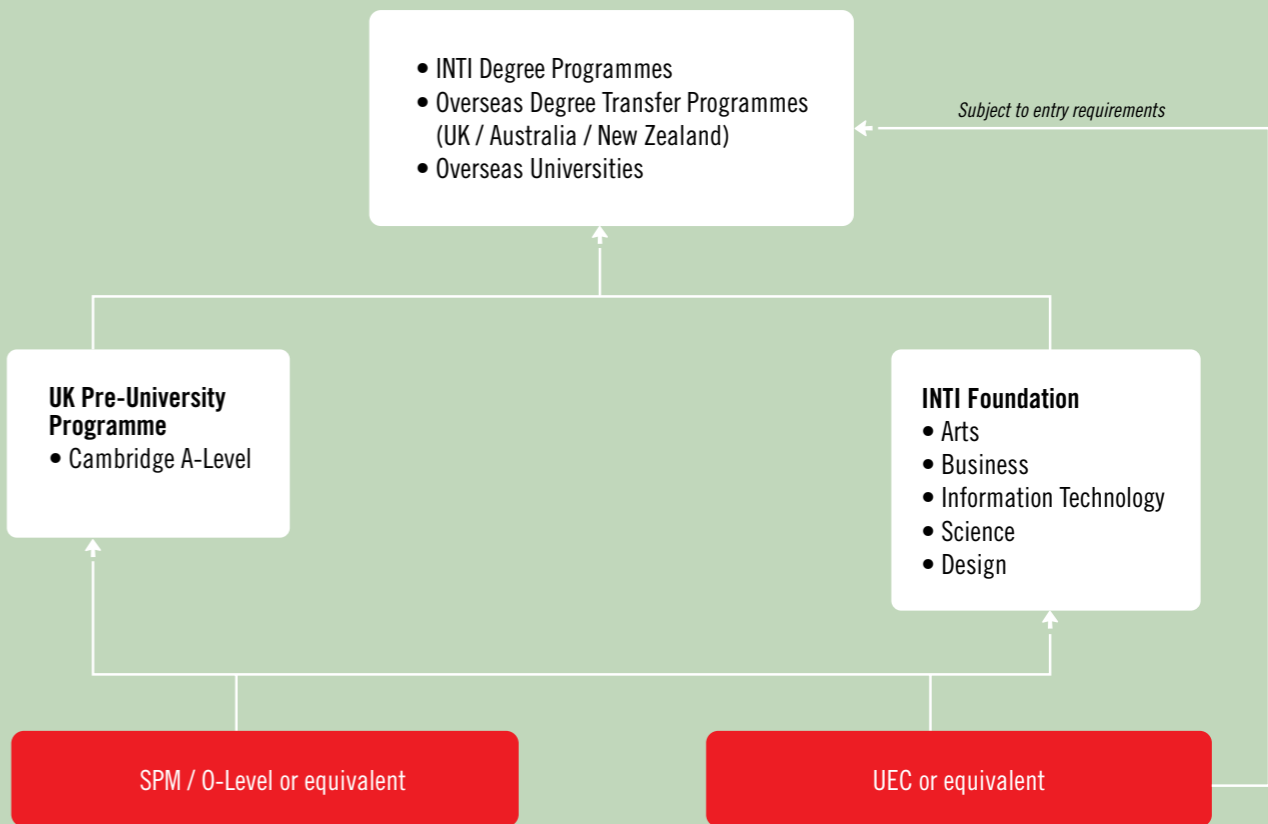
Cambridge A-Level: Milestones of Excellence



INTI PRE-U PATHWAY

Popular Majors:

Accounting / Actuarial Science / Biotechnology / Biomedical Science / Business / Computing & IT / Dentistry / Engineering / Finance / Food Science / Media & Communication / Medicine / Pharmacy / Psychology / Physiotherapy / International Business / Quantity Surveying / Marketing



ENTRY REQUIREMENTS

CAMBRIDGE A-LEVEL

SPM / O-LEVEL / EQUIVALENT*:
5 credits including English

UEC / EQUIVALENT*:
3Bs including English

FOUNDATION IN ARTS

SPM / O-LEVEL / EQUIVALENT:
5 credits

UEC / EQUIVALENT:
Pass UEC with 3 subjects at grade B

FOUNDATION IN BUSINESS

SPM / SPVM / O-LEVEL / EQUIVALENT:
5 credits**

UEC / EQUIVALENT:
Pass UEC with 3 subjects at grade B

FOUNDATION IN INFORMATION TECHNOLOGY

SPM / SPMV / O-LEVEL / EQUIVALENT:
5 credits including Mathematics

UEC / EQUIVALENT:
3Bs including Mathematics

(For all the above entry: Students are required to obtain credits including Additional Mathematics OR credits in Mathematics & 1 Science/Technology/ Engineering related subjects for student who wants to progress to Computer Science Degree programme)

FOUNDATION IN DESIGN

SPM / O-LEVEL / EQUIVALENT:
5 credits including one Art Subject.

UEC / EQUIVALENT:
3Bs

Candidates without an Art subject or who do not have a credit in Art must pass Portfolio Review or Art Test conducted by the College.

FOUNDATION IN SCIENCE

Engineering Pathway[#]

SPM / O-LEVEL / EQUIVALENT:
5 credits including Mathematics and Physics

UEC / EQUIVALENT:
3Bs including Mathematics and Physics

Note: Students are required to obtain a credit in BM and English at SPM / UEC prior to progressing to degree in Quantity Surveying

Pure Science / Other Science Area Pathway[#]

SPM / O-LEVEL / EQUIVALENT:
5 credits including Mathematics and two other Pure Science subjects and a pass in Bahasa Malaysia and English

UEC / EQUIVALENT:
3Bs including Mathematics, two other Science subjects and a pass in English

Biological Science / Bioscience Pathway:
Depending on the final degree choice (Medicine, Dentistry, Pharmacy, Health Science and Allied Health).
Please refer to the Head of Programme for further information on the requirements.

Computer Science & Information Technology Pathway[#]

SPM / O-LEVEL / EQUIVALENT:
5 credits including Mathematics
(Credit in Additional Mathematics / equivalent required for Computer Science)

UEC / EQUIVALENT:
3Bs including Additional Mathematics, two Science subjects and a pass in English

CAMBRIDGE A-LEVEL (CAL)

Conducted by Cambridge Assessment International Education (Cambridge), this programme provides students with a wealth of options to study a wide range of professional courses at the best universities in the world. It also equips them with reasoning and thinking skills that are necessary for degree courses.

The CAL consists of two levels: the Advanced Subsidiary (AS) Level and the Advanced 2 (A2) Level.

International recognition

The Cambridge A-Level is one of the most recognised qualifications around the world. For over 50 years, it has been accepted as proof of academic ability for entry into local and foreign universities and institutions of higher learning.

- Good A-Level grades are key to admission into the world's leading universities and institutions of higher learning
- Good A-Level grades can also result in one full year of advanced standing at universities in the United States and Canada

Assessment

The Cambridge AS and A2 Level examinations are conducted in May / June and October / November. The May / June examination results are released in August, while October / November results are released in January. Students will receive a certificate after completing the AS level examination and the A-Level certificate after completing both the AS level and A2 level examinations.

Examination dates

May / June
October / November

Offered at

INTI International College Subang
(R3/010/3/0398)(11/26)(A7476)

INTI International College Penang
(R3/0011/3/0109)(06/29)(A10116)

INTAKES: JAN & JUL

Duration

1.5 years

Subjects offered

- Biology
- Business
- Chemistry
- Economics
- Further Mathematics*
- Mathematics
- Physics
- Psychology
- Accounting**

Recommended subject combinations

Different recommended subject combinations are available, providing students with a balanced mixture of subjects to meet the subject entry requirements for their university studies. Students can choose either three or four subjects from one of the combinations.

Medicine, Pharmacy, Dentistry, Sciences

- Biology
- Chemistry
- Mathematics
- Physics

Engineering, Actuarial Science, Sciences

- Chemistry
- Economics
- Further Mathematics*
- Mathematics
- Physics

Mass Communication, Finance, Commerce

- Business Studies
- Economics
- Mathematics
- Psychology
- Accounting**

* Subject prerequisites apply.

** Depending on your final degree choice. Please refer to Head of Programme for further clarification.

[#] Subject to campus availability.

*Can only be taken as 4th subject in both campuses.

** Only offered in INTI International College Penang

Please consult the programme counsellors on subject combinations before registering. Students are advised to refer to the respective universities for detailed information on subject prerequisites.

FOUNDATION IN ARTS

This programme is specially designed to prepare students for the field of communication. It also has a few subjects that allow students to venture into Business, Psychology and Sociology. There are four major communication subjects to enhance understanding in the field of communication. As these subjects are also substantial in business degree programmes, students have the option to choose electives or pathways in Business or Psychology. Students are also given an insight into the creative and critical sides of writing to prepare them for an ultimate unique career.

Media and Communication Pathway

This programme is designed to enhance communication skills and media literacy skills required of future media practitioners. Students will be given an insight into the creative and critical side of writing, to prepare them for a career that requires the use of words and images to communicate ideas creatively and effectively via media such as television, radio, newspapers and the Internet.

Business Management Pathway

This programme will also allow students to study courses relevant to their desired degrees in the areas of management. These courses provide a fundamental understanding of concepts and principles of how an organisation works, organisational structure and behaviour, market structure and consumer behaviour.

Psychology Pathway

This programme is a pathway to a specialized degree in Psychology. These courses equip students with a fundamental understanding of concepts and theories to address intellectual, emotional, social, and psychological needs of individuals.

Assessment

Assessment of individual courses in this programme consists of two components:

- Continuous coursework (50%)
- Final examination (50%)

The continuous coursework component comprises different assessment tasks such as projects, assignments, laboratory work, presentations, tests, and others as assigned throughout each semester. The final examination is conducted at the end of each semester. The assessments are subject to quality assurance procedures to maintain high standards and ensure fair assessment.

Offered at

INTI International University
(R3/010/3/0092)(04/28)(A8768)

INTAKES: JAN, MAY & AUG

INTI International College Subang
(R/010/3/0341)(04/25)(MQA/FA5600)

INTAKES: JAN, APR & AUG

Duration

1 Year

** Prerequisite applies*

** For offering of electives, please consult the Head of Programme*

Progression

Students who have successfully completed the Foundation in Arts can choose to enter the following undergraduate programmes:

Media and Communication

- Bachelor of Arts (Hons) Mass Communications 3+0, in collaboration with University of Hertfordshire, UK
- Bachelor of Mass Communication (Hons), in collaboration with University of Hertfordshire, UK
- Bachelor of Media and Communication 3+0, in collaboration with Swinburne University of Technology, Australia
- Bachelor of Arts in Communication 4+0, in collaboration with Southern New Hampshire University, USA

Business

- Bachelor of Business (Hons) with Psychology
- Bachelor of Business 3+0 (major in Finance/ Accounting/ Marketing/ Management/ International Business / Human Resource Management), in collaboration with Swinburne University of Technology, Australia
- Bachelor of Arts (Hons) Marketing 3+0, in collaboration with University of Hertfordshire, UK

Psychology

- Bachelor of Arts in Psychology 4+0, in collaboration with Southern New Hampshire University, USA

Courses offered

- Basic Computing
- English Language Skills 1
- English Language Skills 2*
- Fundamentals of Business Management
- General Studies
- Human Communication
- Introduction to Business Studies
- Introduction to Intercultural Communication
- Introduction to Mass Media
- Self-Development Skills
- Skills for Creative Thinking

Electives* (Please choose one Combination)

- Basic Sociology
- Digital Communication
- Fundamentals of Psychology
- Macroeconomics
- Microeconomics
- Visual Communication

Combination 1

- Digital Communication
- Visual Communication

Combination 2

- Macroeconomics
- Microeconomics

Combination 3

- Basic Sociology
- Fundamentals of Psychology

FOUNDATION IN SCIENCE

This programme prepares students for admission into Science or Engineering-related degree courses at INTI. It is also an exit certificate course that enables students to apply directly to other universities in Malaysia. It is designed to equip students with solid fundamental knowledge that will enable them to pursue their degree studies in the areas of Biotechnology, Engineering, and Allied Health Sciences.

Students have a choice of Engineering, Biological Science or Pure Science. Those who wish to pursue engineering-based programmes need to take engineering elective subjects and those who wish to pursue biology-based programmes need take the biological science elective subjects. However, students who opt for the pure science pathway can pursue their studies in engineering or any science-based undergraduate programme.

** Prerequisite applies*

Assessment

Assessment of individual courses consists of two components:

- Continuous coursework (50%)
- Final examination (50%)

The continuous coursework component comprises different assessment tasks such as projects, assignments, laboratory work, presentations, tests, and others as assigned throughout each semester. The final examination is conducted at the end of each semester. The assessments are subject to quality assurance procedures to maintain high standards and ensure fair assessment.

Offered at

INTI International University
(R3/0011/3/0055)(03/29)(A10019)

INTAKES: JAN, MAY & AUG

INTI International College Subang
(R/010/3/0445)(04/27)(MQA/FA8898)

INTI International College Penang
(R/010/3/0422)(09/2028)(MQA/FA8334)

INTAKES: JAN, APR & AUG

Duration

1 Year

Progression

Students who have successfully completed the Foundation in Science can choose to enter the following undergraduate programmes:

Engineering

- Bachelor of Civil Engineering with Honours
- Bachelor of Mechanical Engineering with Honours
- Bachelor of Science (Hons) Quantity Surveying

Medical & Health Sciences

- B.Sc. (Hons) Physiotherapy
- Bachelor of Traditional Chinese Medicine (Hons)

Biotechnology & Life Sciences

- Australian Degree Transfer Programme (Science)
- Bachelor of Biotechnology (Hons)

Computing & IT

- Bachelor of Information Technology (Hons) (Business Analytics), in collaboration with Coventry University, UK
- Bachelor of Computer Science (Hons) (Mobile Computing / Software Development / Network and Security / Business Analytics / Cloud Computing), in collaboration with Coventry University, UK
- Bachelor of Science with Honours in Computer Science 3+0, in collaboration with Coventry University, UK
- Bachelor of Computer Science 3+0, in collaboration with Swinburne University of Technology, Australia

Courses offered

- Chemistry 1
- Chemistry 2*
- English Language Skills 1
- English Language Skills 2*
- General Studies
- Mathematics 1
- Mathematics 2*
- Self-Development Skills
- Skills for Creative Thinking

Elective papers for Biological Science/ Bioscience Pathway

- Basic Computing
- Biology 1
- Biology 2*
- Statistics

Elective papers for Pure Science / Other Science Area Pathway

- Biology 1
- Biology 2*
- Physics 1
- Physics 2*

Elective papers for Engineering Pathway

- Physics 1
- Physics 2*
- Engineering Mechanics*
- Basic Computing

FOUNDATION IN BUSINESS

The programme aims to equip students with both academic knowledge as well as industry skills to compete in the international market. The programme introduces students to the world of business with an initial grounding in management skills. Students will obtain solid fundamental understanding of concepts, principles, structures and behaviors of an organization, the competitive business environment, and consumer behaviour. The academic knowledge and practical skills gained will help them springboard into the next level, a Business degree programme.

Students will study courses relevant to their desired degrees in the areas of management and accounting. These courses provide a fundamental understanding of concepts and principles of how an organisation works, organisational structure and behaviour, market structure, and consumer behaviour.

Assessment

Assessment of individual courses in the Foundation Programme consists of two components:

- Continuous coursework: 50%
- Final examination: 50%

The continuous coursework component comprises different tasks such as projects, assignments, laboratory work, presentations, tests, and others as assigned throughout each semester. The final examination is conducted at the end of each semester. The assessments are subject to quality assurance procedures to maintain high standards and ensure fair assessment.

Offered at

INTI International University
(R3/0410/3/0026)(04/29)(A4602)

INTAKES: JAN, MAY & AUG

INTI International College Subang
(R3/0011/3/0054)(12/29)(A10123)

INTI International College Penang
(R2/010/3/0003)(10/2025)(A11600)

INTI College Sabah
(R3/0011/3/0126)(06/29)(A10005)

INTAKES: JAN, APR & AUG

Duration

1 Year

Progression

Students who have successfully completed the Foundation in Business can choose to enter the following undergraduate programmes:

Business

- Australian Degree Transfer Programme (Commerce)
- Bachelor of Accountancy (Honours)
- Bachelor of Business (Honours) Digital Enterprise Management
- Bachelor of Business (Honours) Management
- Bachelor of Business (Honours) in Entrepreneurship and Marketing
- Bachelor of Business (Honours) in International Business and Logistics Supply Chain Management
- Bachelor of Business (Honours) (Accounting/ Business Administration/Finance/ Human Resources Management/International Business/ with Psychology/Logistics and Supply Chain Management) in collaboration with University of Hertfordshire, UK
- Bachelor of Business Honours (Marketing) in collaboration with University of Hertfordshire, UK
- Bachelor of Arts (Honours) Accounting and Finance 3+0, in collaboration with University of Hertfordshire, UK
- Bachelor of Arts (Honours) Business Administration 3+0, in collaboration with University of Hertfordshire, UK
- Bachelor of Arts (Honours) Finance 3+0, in collaboration with University of Hertfordshire, UK
- Bachelor of Arts (Honours) Marketing 3+0, in collaboration with University of Hertfordshire, UK
- Bachelor of Business 3+0, in collaboration with Swinburne University of Technology, Australia

Courses offered

Students are required to complete 13 courses as follows:

- English Language Skills 1
- English Language Skills 2*
- Fundamentals of Business Management
- Introduction to Business Studies
- Fundamentals of Accounting
- Basic Computing
- Fundamentals of Mathematics
- Business Statistics
- Microeconomics
- Macroeconomics
- General Studies
- Skills for Creative Thinking
- Self-Development Skills

* Prerequisite applies

FOUNDATION IN INFORMATION TECHNOLOGY

The programme aims to prepare students to progress into various fields of IT and Computer Science Degrees, so that they can thrive in an increasingly competitive employment market. It achieves this through a blend of academic study and skills development. The programme is designed for students who are seeking a career in the field of IT and Computer Science which is aimed to meet the industry demands by producing graduates who are qualified, competent, creative and innovative, and who will eventually be experts in this industry. Graduates of this programme may progress to an undergraduate degree, namely Computer Science, Information Technology, Computing, and Information Systems.

Assessment

Assessment of individual courses in the Foundation Programme consists of two components:

- Continuous coursework: 50%
- Final examination: 50%

The continuous coursework component comprises different tasks such as projects, assignments, laboratory work, presentations, tests, and others as assigned throughout each semester. The final examination is conducted at the end of each semester. The assessments are subject to quality assurance procedures to maintain high standards and ensure fair assessment.

Offered at

INTI International University
(N/482/3/0170)(06/26)(MQA/PA14588)

INTAKES: JAN, MAY & AUG

INTI International College Subang
(N/0611/3/0017)(05/26)(MQA/FA14514)

INTI International College Penang
(N/482/3/0172)(07/2026)(MQA/FA14720)

INTAKES: JAN, APR & AUG

Duration

1 Year

Progression

Students who have successfully completed the Foundation in Information Technology can choose to enter the following undergraduate programmes:

Information Technology

- Swinburne University of Technology, Australia
- Bachelor of Computer Science 3+0
- Bachelor of Information and Communication Technology 3+0

Coventry University, UK

- Bachelor of Science with Honours in Computer Science 3+0
- Bachelor of Computer Science(Hons)
- Bachelor of Computer Science(Hons) Business Analytics
- Bachelor of Computer Science(Hons) Cloud Computing
- Bachelor of Computer Science(Hons) Mobile Computing
- Bachelor of Computer Science(Hons) Network and Security
- Bachelor of Computer Science(Hons) Software Development
- Bachelor of Information Technology (Hons)
- Bachelor of Information Technology (Hons) Business Analytics

INTI International University

- Bachelor of Technology (Honours) Data Science

Courses offered

Compulsory (13 courses):

- English Language Skills 1
- English Language Skills 2*
- Introduction to Business Studies
- Fundamentals of Mathematics
- Advanced Mathematics*
- Business Statistics
- General Studies
- Skills for Creative Thinking
- Self-Development Skills
- Basic Computing
- Programming Techniques
- Data Communication and Networking*
- Introduction to Database Management System*

* Prerequisite applies

FOUNDATION IN DESIGN

The Foundation in Design programme offers a broad-based scope for exploration and experimentation that will enable students to become independent thinkers, creators or designers.

Students are exposed to topics and projects which will allow them to become creative thinkers and find practical applications that can be translated into working ideas and designs. The programme also enables students to develop a range of practical skills and fundamental knowledge in relation to art & design, preparing them for smooth progress to a design degree of their choice.

Highlights

- Pathway to a quality UK Design Degree offered at INTI
- The curriculum covers broad theoretical and practical design skills
- Teaching and learning is supported by experienced lecturers, ensuring a smooth progression to degree studies
- Specialist lecturers who are also design professionals
- Experiential and innovative learning via Project-based Learning
- The programme and curriculum emphasise multi-cultural perspectives
- Design-driven learning environment with state-of-the-art facilities

Offered at

INTI International College Subang
(R2/010/3/0417)(03/27)(MQA/FA1292)

INTAKES: JAN, APR & AUG

Duration

1 Year



The Foundation in Design at INTI is recognised by Sheffield Hallam University (SHU), UK as providing progression on to any of its three degree programmes at INTI: BA (Hons) Fashion Management and Communication 3+0, BA (Hons) Graphic Design 3+0 and Bachelor of Art (Honours) Interior Architecture & Design 3.5+0.

* Progression to a SHU degree is subject to English language proficiency and the successful review of a relevant portfolio.

Programme structure

- 3D Design
- Critical Studies
- Design Communication Skills 1
- Design Communication Skills 2
- Design Theories to Practices
- Design Project
- English Language Skills 1
- English Language Skills 2
- General Studies
- History of Art & Design
- Portfolio Design
- Self-Development Skills
- Skills for Creative Thinking

HEAR WHAT OUR FOUNDATION ALUMNI SAY



“As a current student in the Bachelor of Business Finance programme at INTI, my educational journey started with the Foundation in Business, and it has been truly enlightening and life changing. Participating in a variety of enjoyable activities, societies, and workshops during my Foundation year has given me priceless experience and created cherished memories. I am deeply thankful to INTI for giving me this chance to embark on such an incredible and transformative journey. The knowledge and experiences I've gained here will undoubtedly steer me towards a successful and fulfilling future.”

MOVINRAJ RAMAN
Foundation in Business

“Studying Foundation in Arts has truly been an eye-opening and life-changing journey for me. The exceptional lecturers and helpful classmates created a conducive learning atmosphere that made my academic experience not only achievable but also enjoyable. With their support and motivation, I discovered my interest in Mass Communication, which drove me to pursue a Bachelor's Degree in Mass Communication at INTI. The knowledge and skills I gained during my Foundation in Arts studies have undeniably shaped my trajectory and provided me with a clearer path in my academic pursuits.”

AUDREY LUM MUN HUIEN
Foundation in Arts



“As a proud alumnus of this course, I can personally attest to the outstanding lecturers, comprehensive curriculum, motivating learning atmosphere, helpful classmates, and dedicated programme head. The combination of these exceptional qualities made my time at INTI both enjoyable and meaningful. However, it's important to recognise that this programme came with its set of challenges. As one of the few students who achieved a perfect 4.0 GPA, I can confirm that this programme pushes you to surpass your limits and attain high levels of academic excellence. Choosing the Foundation in Science programme at INTI is a decision that will propel you to the next level of your educational journey.”

LOW JIAN HE
Foundation in Science

“Completing my Foundation at INTI was never a regret in my education pathway. While it may seem obvious, this program truly laid the groundwork for what I want my university life to be like—having fun while making an impact on the community and excelling in my studies. I can honestly say that I had the most fun studying alongside my peers, supported by incredibly friendly lecturers. This is why I believe that completing my Foundation at INTI will always be one of the best decisions I've made in my educational journey.”

AMEER MUSHARRAF NOOR MUSADDIK
Foundation in Information Technology



Get Connected with INTI!



NEWINTI.EDU.MY



INTI.edu



INTI_edu



INTI_edu



INTI.edu



INTI International University & Colleges

INTI NETWORK

INTI INTERNATIONAL UNIVERSITY ^{DU022(N)}
06-798 2000 | Persiaran Perdana BBN, 71800 Putra Nilai

INTI INTERNATIONAL COLLEGE SUBANG ^{DK249-01(B)}
03-5623 2800 | No. 3, Jalan SS15/8, 47500 Subang Jaya

INTI INTERNATIONAL COLLEGE PENANG ^{DK249-02(P)}
04-631 0138 | No. 1-Z, Lebuhr Bukit Jambul, 11900 Penang

INTI COLLEGE SABAH ^{DK249-03(S)}
088-489 111 | Level 2 (South Wing) & Level 5, KM10,
Jalan Tuaran Bypass, 88450 Kota Kinabalu, Sabah

INTI EDUCATION COUNSELLING CENTRES ^(266729-P)

PERAK 05-241 1933 | No. 258, Jalan Sultan Iskandar, 30000 Ipoh
JOHOR 07-364 7537 | No. 25, 25-01, Jalan Austin Heights 8/1, Taman Austin Heights, 81100 Johor Bahru
PAHANG 09-560 4657 | B16, Jalan Seri Kuantan 81, Kuantan Star City II, 25300 Kuantan
SARAWAK 082-265 897 | Ground Floor SL. 38. Lot 3257, Block 16, Gala City, Jalan Tun Jugah, 93350 Kuching

